

RCCB, 2-pole, type F, selective, In: 80 A, 300 mA, Un AC: 230 V



| Model  |                              |
|--|------------------------------|
| Product brand name   | SETRON                       |
| Product designation  | RCCB                         |
| Design of the product  | Selective                    |
| General technical data   |                              |
| Number of poles  | 2                            |
| Size of installation devices / acc. to DIN 43880   | 1                            |
| Protection against electrical shock  | Finger and back-of-hand safe |
| Short-circuit current rating   | 10 kA                        |
| circuit-breaker / Design   | 5SV3                         |
| Mechanical service life (switching cycles) / typical   | 10 000                       |
| Switching function / short-term delayed  | No                           |
| Overtoltage category   | III                          |
| Supply voltage   |                              |
| Supply voltage   |                              |
| <ul style="list-style-type: none"> <li>• at AC / rated value</li> <li>• for testing equipment / minimum</li> </ul> | <p>230 V</p> <p>100 V</p>    |
| Supply voltage frequency   |                              |

|   |   |
|---|---|
| • rated value   | 50 Hz   |
| <b>Protection class</b>   |   |
| <b>Protection class IP</b>  | IP20, if the distribution board is installed, with connected conductors |
| <b>Switching capacity</b>   |   |
| Switching capacity current / according to IEC 61008-1 / rated value               | 0.8 kA  |
| <b>Dissipation</b>  |   |
| <b>Power loss [W]</b>   | 3.9 W   |
| • for rated value of the current / at AC / in hot operating state / per pole      |   |
| <b>Electricity</b>  |   |
| <b>Tripping residual current / rated value</b>                                    | 300 mA  |
| rated current $I_n$ / IEC, DIN/VDE / at 40 Cel                                    | 80 A  |
| <b>Type of fault current</b>  | F   |
| Current / at AC / rated value   | 80 A  |
| <b>I<sup>2</sup>t-value / permissible</b>   | 44 880 A <sup>2</sup> ·s  |
| Surge current resistance / rated value  | 5 kA  |
| <b>Operating frequency</b>  | 50/60Hz   |
| <b>Product details</b>  |   |
| Product feature / silicon-free  | Yes   |
| Product extension / can be installed / supplementary devices                      | Yes   |
| <b>Number</b>   |   |
| <b>Number of test cycles / for environmental testing / acc. to IEC 60068-2-30</b> | 28  |
| <b>Connections</b>  |   |
| <b>Connectable conductor cross-section / stranded</b>                             |   |
| • minimum   | 0.75 mm <sup>2</sup>  |
| • maximum   | 35 mm <sup>2</sup>  |
| <b>Connectable conductor cross-section / solid</b>                                |   |
| • minimum   | 0.75 mm <sup>2</sup>  |
| • maximum   | 35 mm <sup>2</sup>  |
| <b>Tightening torque / with screw-type terminals</b>                              |   |
| • minimum   | 2.5 N·m   |
| • maximum   | 3 N·m   |
| Position / of power supply cord   | top or bottom   |
| <b>Mechanical Design</b>  |   |
| <b>Height</b>   | 90 mm   |
| <b>Width</b>  | 36 mm   |

|                       |                |
|-----------------------|----------------|
| Depth                 | 70 mm          |
| Mounting position     | any            |
| Installation depth    | 70 mm          |
| Number of width units | 2              |
| Mounting type         | DIN rail (REG) |
| Net weight            | 200 g          |

### Environmental conditions

#### Ambient temperature

- minimum -25 °C
- maximum 45 °C
- during storage / minimum permissible -40 °C
- during storage / maximum permissible 75 °C

### Certificates

#### Equipment marking

- acc. to DIN EN 61346-2 F
- acc. to DIN EN 81346-2 F

#### General Product Approval

#### Declaration of Conformity



[Miscellaneous](#)



### Further information

#### Information- and Downloadcenter (Catalogs, Brochures,...)

<http://www.siemens.com/lowvoltage/catalogs>

#### Industry Mall (Online ordering system)

<https://mall.industry.siemens.com/mall/en/en/Catalog/product?mlfb=5SV3617-7>

#### Service&Support (Manuals, Certificates, Characteristics, FAQs,...)

<https://support.industry.siemens.com/cs/ww/en/ps/5SV3617-7>

#### Image database (product images, 2D dimension drawings, 3D models, device circuit diagrams, ...)

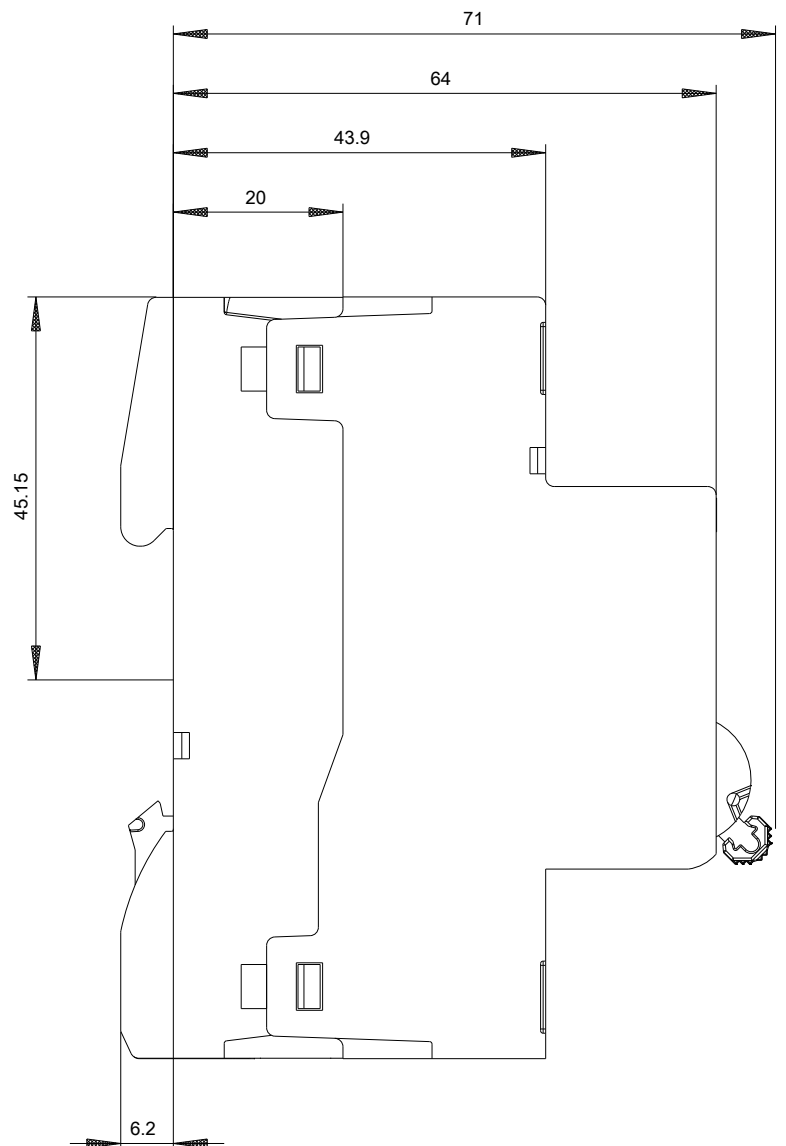
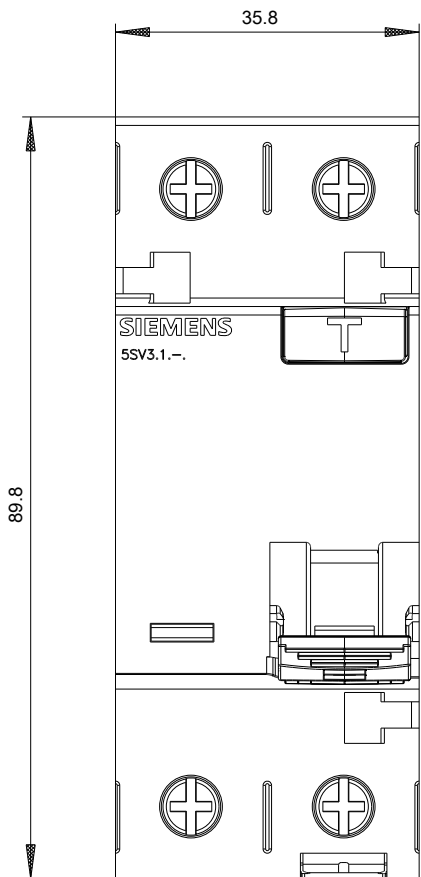
[http://www.automation.siemens.com/bilddb/cax\\_en.aspx?mlfb=5SV3617-7](http://www.automation.siemens.com/bilddb/cax_en.aspx?mlfb=5SV3617-7)

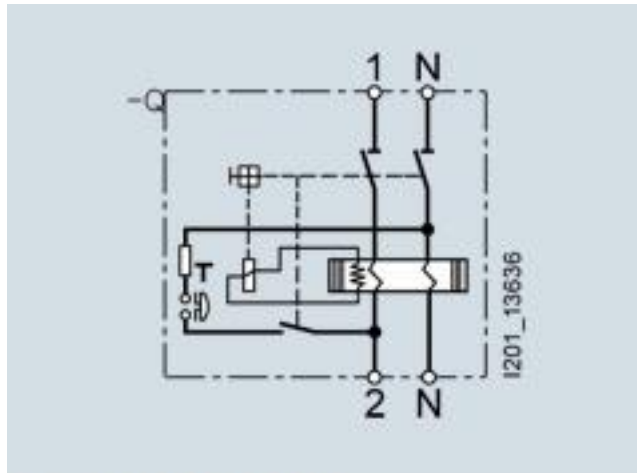
#### CAX-Online-Generator

<http://www.siemens.com/cax>

#### Tender specifications

<http://www.siemens.com/specifications>





Internal circuit diagram IEC